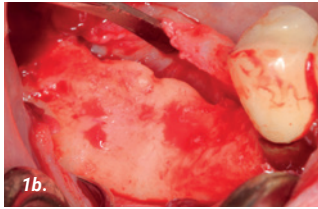


GBR PRIOR TO IMPLANT PLACEMENT

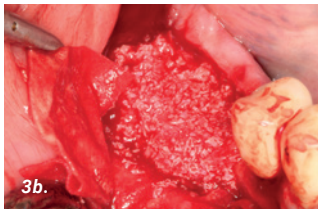
CASE PROVIDED BY ASSOCIATE PROF DARKO BOŽIĆ, ZAGREB, CROATIA



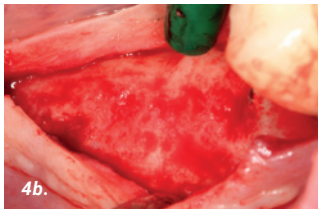
- 1a. Patient with a distal mandibular edentulous ridge requiring implant placement.
- 1b. Flap elevation revealed significant loss of ridge height and width.



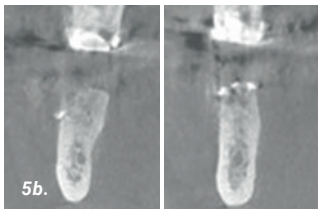
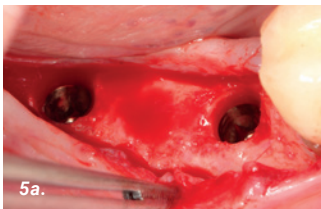
- 2a. Edentulous ridge with significant loss of height and width.
- 2b. A small amount of autogenous bone was harvested leaving small cortical perforations.



- 3a. The autogenous bone was mixed with xenograft material saturated with hyaluronic acid.
- 3b. Placement and adaptation of the graft mixture onto the recipient site.



- 4a. The graft mixture was covered with a resorbable collagen membrane (SMARTBRÁNE) and fixed with pins.
- 4b. AFTER 6 MONTHS
Significant gain of bone width with almost no residual graft particles visible.



- 5a. Implants of 4mm width were placed in the correct prosthetic positions.
- 5b. AFTER 6 MONTHS
Cone beam computed tomography (CBCT) showing a significant amount of newly formed bone.