



Immediate post-extraction implants in infected sites using Plasma Rich in Growth Factors (PRGF)

Ippolito Roberta*, Octavian Fiore, Cucchi Alessandro
* Ippolito.roberta85@gmail.com - University of Bologna, Italy



The aim of this report is to illustrate a predictable approach to place implants after extraction of teeth with infections. The presence of active infection in the extraction site is considered one of the main contraindications to immediate implant insertion because of the increased possibility of infection spreading to peri-implant tissues during the healing period. Recent investigations verified that the presence of a perirapical infection may not be an inconvenience for immediate implants if the surgical sites are appropriately cleaned and decontaminated. In these cases, guided bone regeneration (GBR) is usually performed to fill the bone implant gap and/or other bone deficiencies. In addition, this surgical protocol proposes the use of the PRGF as a key contribution in achieving a therapeutical success like in this case report.



Fig.1 – Pre-operative condition (lateral view)



Fig.2 – Pre-operative condition (occlusal view)

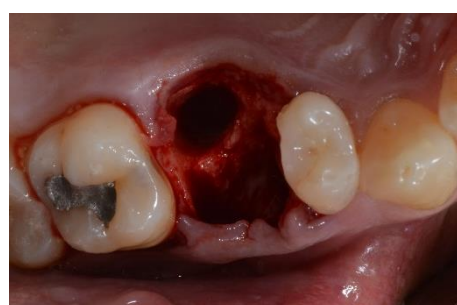


Fig.3 – post- extraction socket

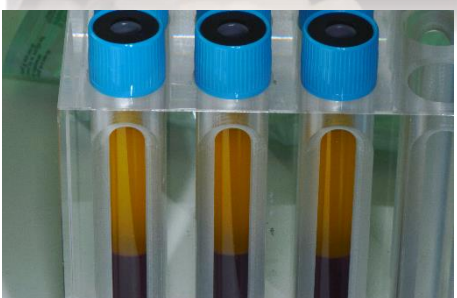


Fig.4 – Blood samples after centrifugation

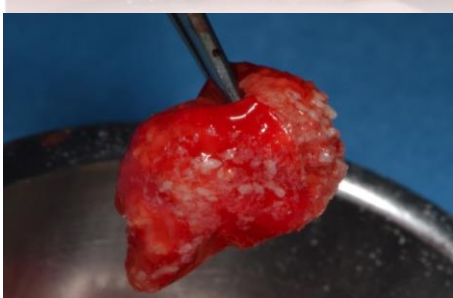


Fig.5 – Equimatrix and PRGF



Fig.6 – Implant and PRGF

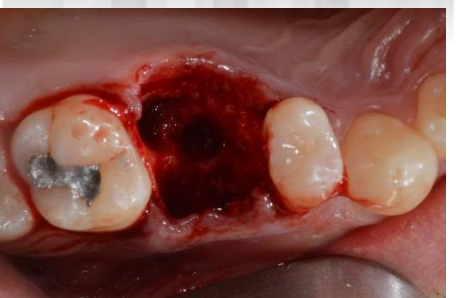


Fig.7 – Implant site preparation

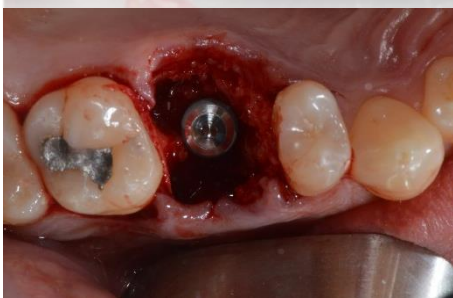


Fig.8 – Implant placement



Fig.9 – Equimatrix and Cytoplast RTM Collagen



Fig.10 – Secondary intention closure



Fig.11 – Healing after 15 days



Fig.12 – Functional loading

Other studies have demonstrated the accelerated healing effect of the PRGF in post extraction socket. PRGF contains growth factors at a concentration of 2-3 times higher than peripheral blood capillaries. Clinical application of PRGF is an accelerating tool for sealing the extraction sockets, which will promote complete epithelialization of soft-tissue. In addition, use of PRGF with dental implants in fresh sockets promotes osseointegration, bone-implant contact and soft tissue healing